



IT'S THE LAW

SMOKE ALARMS

ARE REQUIRED ON EVERY

STOREY

NEEBING EMERGENCY SERVICES



EMERGENCY DIAL 911

The Ontario Fire Code states that all residential units shall have at least one smoke alarm on each storey in addition to the existing requirement that smoke alarms shall be installed between each sleeping area and the remainder of the dwelling.

The penalties for non-compliance with smoke alarm requirements remain the same:

- *\$235 fine (total payable) under Part 1 (Certificates of Offence) of the Provincial Offences Act per offence; or*
- *Landlords: a maximum \$50,000 fine or up to one year in jail or both for individuals and a maximum \$100,000 fine for corporations under Subsection 28.(3) of the Fire Protection & Prevention Act, 1997*

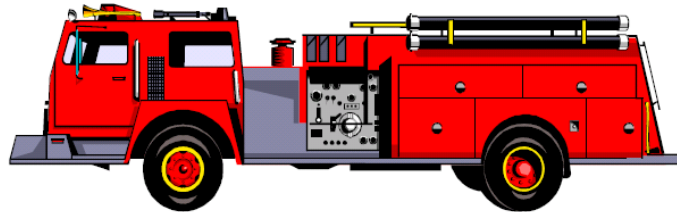
TIPS

- Have a working smoke alarm on every storey of your home.
- Change the battery in each smoke alarm once a year.
- Make sure you can hear the smoke alarm in your bedroom with the door closed.
- If your smoke alarm is more than 10 years old, it may not be as sensitive as needed and should be replaced.
- For mounting instructions follow installation guidelines on the package for both ceiling or sidewall locations.

CONTACT YOUR FIRE DEPARTMENT:

- If you have any questions or concerns;
- If you need help understanding this checklist or tips;
- If you need help in determining where smoke alarms are required.

Hug a firefighter



Feel warm all over

NEEBING EMERGENCY SERVICES

4766 Highway 61

Neebing, ON

P7L 0B5

Telephone: (807) 474-5331

Fax: (807) 474-5332

CHECKLIST

Storey means that portion of a building that is situated between the top of any floor and the top of the floor next above it, and where there is no floor above it; that portion between the top of the floor and the ceiling above it.

Basement means a storey or storeys of a building located below the first storey.

Do you...

- 1) Have a working smoke alarm on every storey of your home?
 Yes No
- 2) Test each smoke alarm once a month?
 Yes No
- 3) Replace the battery in each smoke alarm at least once a year?
 Yes No
- 4) Have a smoke alarm between the bedroom area(s) and the rest of the house?
 Yes No

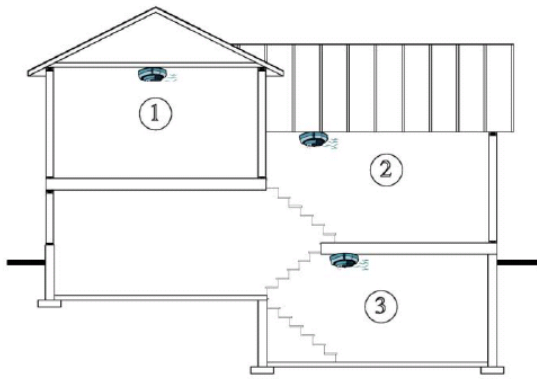
If you answered YES to all the questions
CONGRATULATIONS!

If you answered NO,
your home and your safety may be in JEOPARDY.

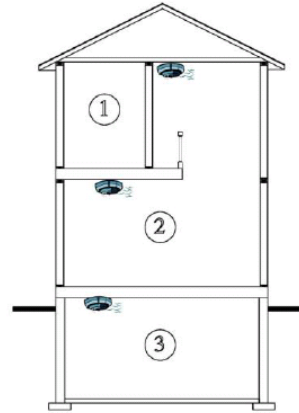
Follow the tips to IMPROVE YOUR SAFETY.

Make your changes today!

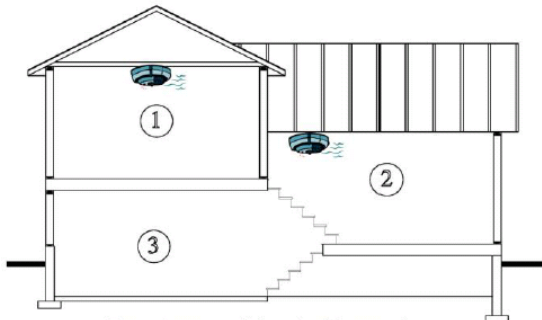
Location of smoke alarms ..



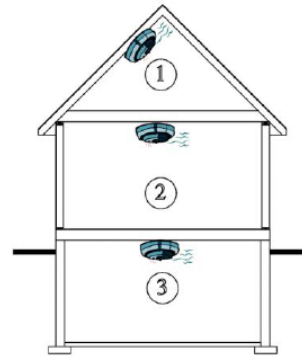
Two storey split level with basement



One storey with balcony



Two storey split level with crawl space



One storey with usable attic space

** Suggested location on all levels

** Locations may vary depending on the existence of bedrooms, doors or other features